



HS2 Euston Cavern Shaft - Headhouse (UK) Structural Waterproofing

Country	United Kingdom
Type	Railway
Client	High Speed Two (HS2) Limited
Main Contractor	SCS JV (Skanska, Costain, Strabag)
Execution of the work	Renesco UK Limited
Designer	Design House JV (Arup, Typsa, Strabag)
Construction Period	2023

Project Description

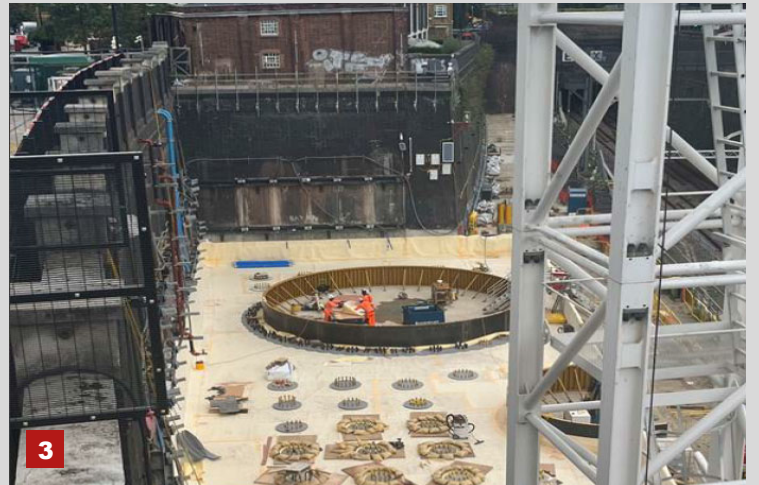
High Speed 2 (HS2) is the new High Speed Rail Network running between London in the South and Manchester and Leeds to the North. Phase-1 involves the route between London and Birmingham with approximately 200km of new high-speed rail being laid, just under half is located under West-London, between the HS2 southern terminus at Euston Station and a portal at West Ruislip.

The Euston Cavern Shaft Headhouse, which will provide emergency access to the high-speed railway, is one of eight headhouses that will be built in Greater London above shafts leading down to the 26-mile-long London tunnels below. It will be located in the railway cutting at the northern end of Park Village East.

Scope of Service

Applying the structural waterproofing for the base slab, pile heads and secant pile wall using a pre-applied fully bonded system according to BS 8102:2022 Type A.

- Slab Waterproofing Installation
- Fully bonded sheet membrane system, 1.2mm thickness, Flexible Polyolefin (FPO) based.
- Adhesive tape
- Epoxy Resin



1. Base slab
2. Shaft Detail
3. Jobsite overview